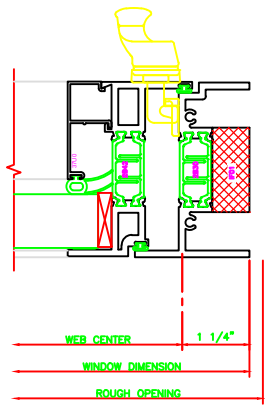
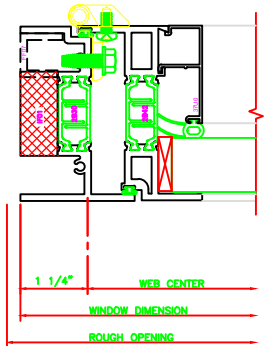


430 JAMB  
325 CASEMENT IN 4-BAR ARMS



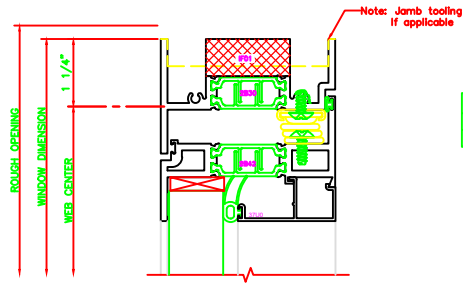
431 JAMB  
325 CASEMENT IN CAM LOCK

19 = **ERECTOR NOTE:**  
THE HINGED JAMB FRAME SHALL BE INSTALLED PLUMB. ALL HINGES SHALL BE SECURELY BLOKED AND ANCHORED TO THE CONDITION THROUGH THE HINGES OR AS CLOSE AS POSSIBLE TO THE HINGES.

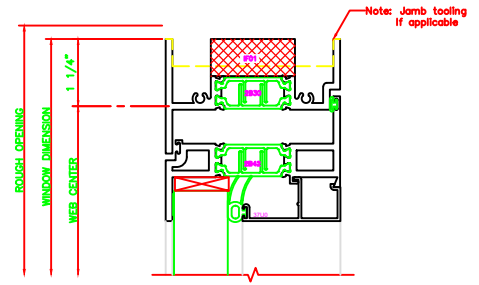


432 JAMB  
325 CASEMENT IN BUTT HINGES

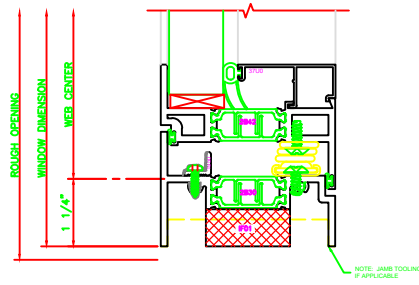
130 HEAD  
325 CASEMENT IN 4-BAR ARM



131 HEAD  
325 CASEMENT IN BUTT HINGES



230 SILL  
325 CASEMENT IN 4-BAR ARMS



231 SILL  
325 CASEMENT IN BUTT HINGES

